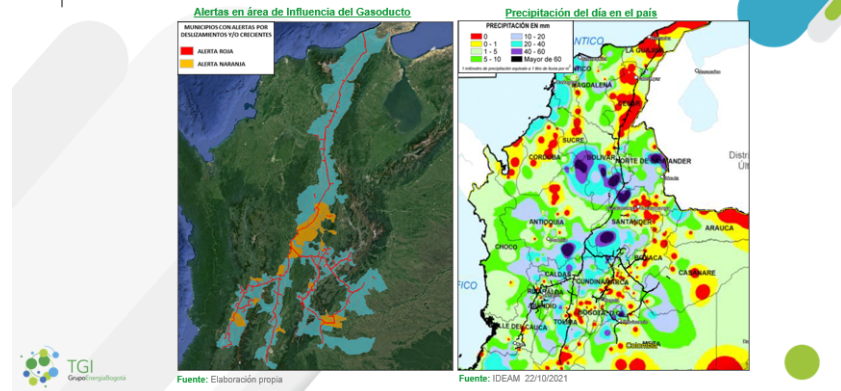


# 1 TGI early warning report

- Based on specialized public meteorological information, this information is crossed against the infrastructure of the operation.
- Monitoring and verification points are generated based on the result of this comparison.
- With technical visits in the field, the materialization or not of an alert and its possible emergency situation and management are determined.
- This analysis is part of the company's preparation for the consequences of climate change and how to manage this associated risk.

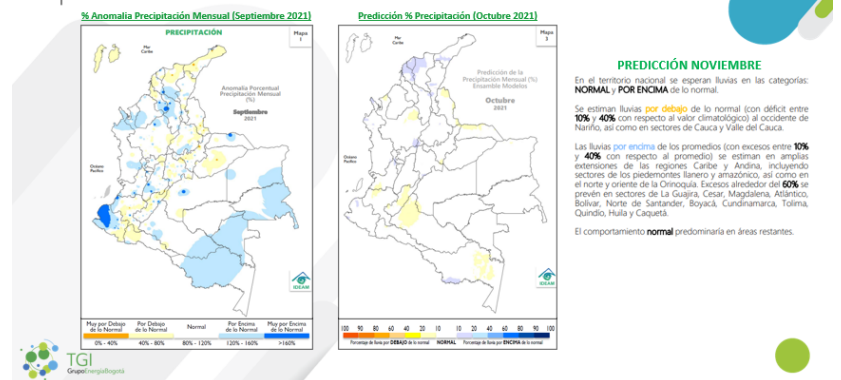
## Alertas Meteorológicas Vs Sitios Críticos TGI

22-10-2021



## Predicción Climática

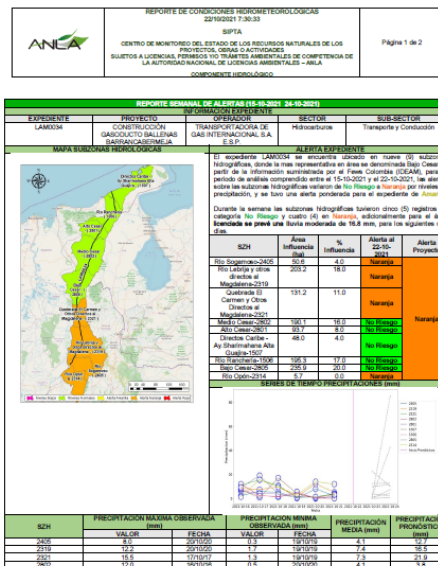
Octubre 2021



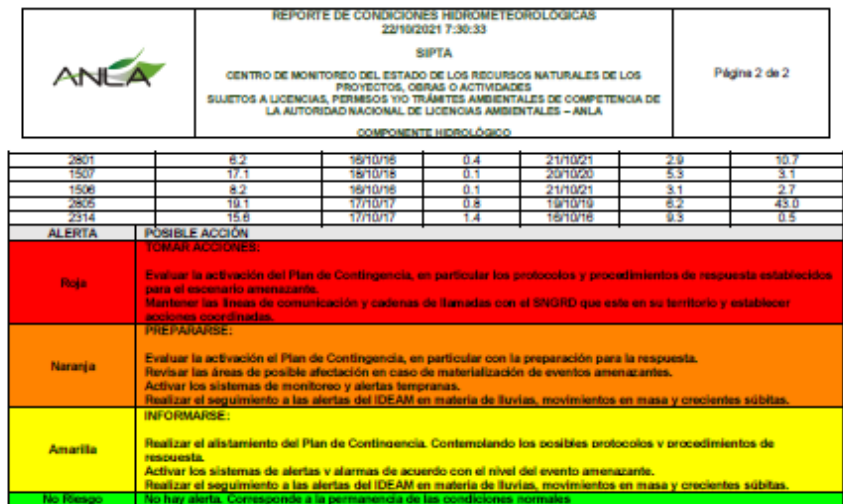
# 2

## ANLA early warning report

- The Center for monitoring the status of natural resources of projects, works or activities subject to licenses, permits and / or environmental procedures under the jurisdiction of the national environmental licensing authority ANLA, generates reports based on predictions of precipitation against the infrastructure licensed.
- Based on these reports plus the generation of internal early warnings, follow-ups and the possibility of specific monitoring of the infrastructure are generated.



\* La Autoridad Nacional de Licencias Ambientales genera este reporte informativo a manera de recomendación con fines preventivos y no constituye una obligación ambiental alguna sobre las acciones a realizar por parte del titular del proyecto. El contenido de los datos climáticos es del IDEAM. La ANLA y sus entidades de Sistema Nacional de Gestión de Riesgo, si las leyes y responsabilidades establecidas en la normatividad aplicable a dicho Sistema.



# 3

## Land routes to the rights of way.

- A team traveling to the rights of way identifies possible consequences associated with climate change that may affect infrastructure and operations.
- Based on this identification and the intensity of the events, immediate, short and medium-term actions are determined to mitigate, control and suppress these threats.

